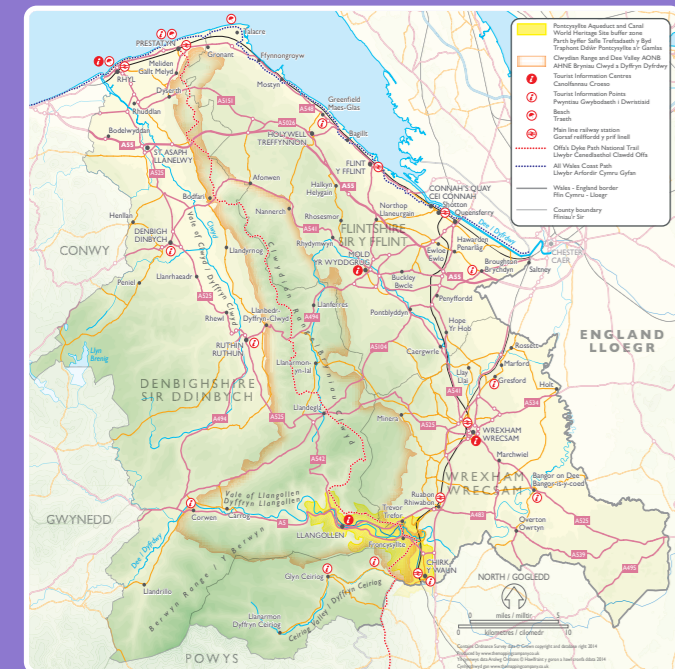


## Darganfod Sir Ddinbych Discover Denbighshire



01978 860828

[discoverdenbighshire.co.uk](http://discoverdenbighshire.co.uk)

[northeastwales.co.uk](http://northeastwales.co.uk)

[medieval-wales.com](http://medieval-wales.com)

[clwydianrangeanddeevalleyaonb.org.uk](http://clwydianrangeanddeevalleyaonb.org.uk)

 Darganfod Sir Ddinbych  
Discover Denbighshire



Flotograffau / Photography  
© Crown copyright (2014) Visit Wales / © Hawlfraint y Goron (2014) Croeso Cymru, White Fox, Laurence Crossman-Emms, Eye Imagery, Orange Imaging

## Tref i bob diwrnod

Nid Llangollen yw'r unig dref yn Sir Ddinbych gyda llwybr ei hun. Mae saith llwybr arall - pob un yn llawn o ddi-ddordeb hanesyddol. Ond pob un yn wahanol iawn, gyda'r gobaith y byddwch yn darganfod hynny dros eich hunain. Cyn belled â bod gennych wythnos neu ddwy arall i'w sbario.

Ewch i Rhuthun i weld yr oriel celfyddydau cymhwysol gorau yng Nghymru, Llangollen am ei rheilffordd stêm estynedig newydd, Corwen i weld cofeb un o awyryr mwyaf Cymru a Dinbych am ei chastell ar ben y bryn a muriau tref atgofus.

**Rhuthun  
Ruthin**  
llwybr y  
dref  
town  
trail  
sir ddinbych  
denbighshire

**Llangollen**  
llwybr y  
dref  
town  
trail  
sir ddinbych  
denbighshire

Ewch i'r Rhyll ar gyfer ei phromenâd a thair milltir o dywod euraidd, Prestatyn ar gyfer dechrau Llwybr Cenedlaethol Clawdd Offa, Rhuddlan am ei castell ar lan yr afon a Llanelwy i weld y gadeirlan hynafol leiaf ym Mhrydain.

**Dinbych  
Denbigh**  
llwybr y  
dref  
town  
trail  
sir ddinbych  
denbighshire

**Corwen**  
llwybr y  
dref  
town  
trail  
sir ddinbych  
denbighshire

## A town for every day

Llangollen isn't the only town in Denbighshire with its very own trail. There are seven others - all packed with historic interest. But all very different, as we hope you'll discover for yourself. Just as long as you have another week or so to spare.

**Y Rhyll  
Rhyll**  
llwybr y  
dref  
town  
trail  
sir ddinbych  
denbighshire

**Prestatyn**  
llwybr y  
dref  
town  
trail  
sir ddinbych  
denbighshire

Visit Ruthin for the best applied arts gallery in Wales, Llangollen for its newly extended steam railway, Corwen for a stirring memorial to Wales's greatest hero and Denbigh for its hilltop castle and evocative town walls.

**Llanelwy  
St Asaph**  
llwybr y  
ddinas  
city  
trail  
sir ddinbych  
denbighshire

**Rhuddlan**  
llwybr y  
dref  
town  
trail  
sir ddinbych  
denbighshire

Visit Rhyll for its promenade and three miles of golden sands, Prestatyn for the start of Offa's Dyke Path National Trail, Rhuddlan for its stupendous riverside castle and St Asaph for the smallest ancient cathedral in Britain.

## Eich antur yn Sir Ddinbych

Trefi marchnad llawn prysurdeb. Diwylliant Cymreig unigryw. Bwyd a diod blasus. Un o'r tirweddau gwarchoddedig harddaf yng Nghymru.

Bydd y syniadau'n byrlymu ar gyfer pethau i'w gwneud yn Sir Ddinbych. Ond rhag ofn... dyma ychydig o anturiaethau y dylech roi cynnig arnynt - a gallwch eu llwytho i lawr yn syth i'ch ffôn symudol.

Efallai yr hoffech roi cynnig ar weithgaredd greadigol, cael hwyl gyda'ch plant neu ymweld â hen adeiladau. Efallai bod gennych ddi-ddordeb mewn hanes cymdeithasol, teithiau cerdded yng nghefn gwlad neu deithiau trefol. Beth bynnag sydd at eich dant, mae 'na Antur Ddigidol Sir Ddinbych ar eich cyfer chi.

Yn Llangollen fe allwch chi ddysgu am fywyd ar y gamlas yn y bedwaredd ganrif ar bymtheg, edmygu harddwch yr ardal a thynnu lluniau gyda'ch camera neu fe allwch chi hwyltio "cychod daill" ar y dŵr. Ond nid dyna'r cwbl. Ewch i'r wefan i weld yr holl bethau sydd gan Sir Ddinbych i'w gynnig i chi ar flaenau eich bysedd.

[digidolsirddinbych.co.uk](http://digidolsirddinbych.co.uk)

## Your Denbighshire adventure

Bustling market towns. A unique Welsh culture. Delicious food and drink. One of the most beautiful protected landscapes in Wales.

You won't find yourself too short of ideas about what to do in Denbighshire. But just in case we've come up with a few adventures for you try - and you can download them straight to your mobile.

You might like getting creative, fun with your kids or visiting old buildings. You might be into social history, country walks or urban strolls. Whatever you want, there's a Denbighshire Digital Adventure just for you.

In Llangollen alone you can hear about canal life in the 19th century, capture its beauty with your camera or sail "leaf boats" on the water. And it doesn't stop there. Just visit the website to have the whole of Denbighshire at your fingertips.

[digitaldenbighshire.co.uk](http://digitaldenbighshire.co.uk)



# Llangollen

# llwybr y dref town trail

# sir ddinbych denbighshire

## Darganfod Llangollen

Mae Llangollen wedi bod yn un o gyrchfannau mewndirol mwyaf poblogaidd Cymru ers peth amser bellach – a dydi hynny ddim yn syndod. Yng nghysgod y mynyddoedd ac adfeilion Castell Dinas Brân a adeiladwyd yn y 13eg ganrif, gorweddai'r dref mewn llecyn hardd ac unigryw.

Mae pedair priffordd fawr yn cyfarfod yma: Afon Dyfrdwy, Camlas Llangollen, y rheilffordd stêm a ffordd gerbydau enwog Telford, sef yr A5. Mae'r llwybr cylchol hwn yn rhoi cyfle i chi eu harchwilio nhw i gyd a mynd ar daith bensaernïol ar hyd strydoedd prysur y dref.

Bydd y daith ei hun yn cymryd ychydig oriau. Ond mae gofyn eich bod chi'n caniatáu ychydig bach mwy o amser. Wedi'r cyfan, efallai yr hoffech chi daith mewn cwch camlas neu drên stêm.

A chyda digonedd o siopau, tafarndai, bwytai a chaffis i'w harchwilio hefyd, efallai y cewch chi'ch tentio i dreulio diwrnod cyfan yma.

## Exploring Llangollen

Llangollen has long been one of Wales's most popular inland resorts – and no wonder. Its setting, guarded by mountains and the ruins of 13th century Castell Dinas Brân, is uniquely picturesque.

Four great highways meet here: the River Dee, Llangollen Canal, the preserved steam railway and Telford's monumental A5 coach road. This circular walk allows you to explore them all and take an architectural tour through the town's bustling streets.

The actual walking should last a couple of hours. But you'd better allow a bit longer. After all, you could easily find yourself on a canal boat or riding a steam train.

And with plenty of shops, pubs, restaurants and cafés to explore as well, you might very well be tempted to make a day of it.



## Beth sy'n ei wneud yn arbennig?

Mae Llangollen yn rhan o dirwedd eiconig. Mae Safle Treftadaeth y Byd Traphont Ddŵr a Chamlas Pontcysyllte yn ymestyn 11 milltir o Sir Amwythig i Raeadr y Bedol, ac mae Glanfa Llangollen yn rhan ohono.

O'ch cwmpas mae Ardal o Harddwch Naturiol Eithriadol Bryniau Clwyd a Dyffryn Dyfrdwy, un o bum ardal o'i math yng Nghymru.

Mae twristiaid wedi heidio yma ers oes y Sioriaid. Ac maen nhw'n dal yn heidio yma hyd heddiw ar gyfer yr hanes, y bensaerniaeth, y siopau, a'r bwyd a'r diod blasus. Mae Llangollen yn faes chwarae antur awyr agored enfawr – fe allwch chi bysgota yn afon Dyfrdwy, canwio dros y dyfroedd gwyllt a cherdded ar hyd y mannau agored llydan.

Am fwy o wybodaeth, codwch gopi o "Mwynhewch Sir Ddinbych Ganoloesol" neu ewch i [medieval-wales.com](http://medieval-wales.com).

## What makes it special?

Llangollen is part of an iconic landscape. The Pontcysyllte Aqueduct and Canal World Heritage Site stretches for 11 spectacular miles from Shropshire to the Horseshoe Falls, taking in Llangollen Wharf along the way.

All around you is the Clwydian Range and Dee Valley Area of Outstanding Natural Beauty, one of just five in Wales.

Tourists have been drawn here since Georgian times. They still come today for the history, the architecture, the shops, the wonderful food and drink. And since Llangollen is one huge outdoor adventure playground, they also fish the Dee, canoe the rapids and walk the wide open spaces.

To find out more, pick up a copy of "Enjoy Medieval Denbighshire" or visit [medieval-wales.com](http://medieval-wales.com)

## Ble awn ni nesaf?

Dylai trenau, cychod, siopau, bwytai a thai hanesyddol Llangollen fod yn fwy na digon i'ch cadw chi'n brysur. Ond os ydych chi'n penderfynu symud ymlaen, mae rhai o atyniadau enwocaf gogledd Cymru daflriad carreg o'r dref.

## Where shall we go next?

The trains, boats, shops, restaurants and historic houses of Llangollen should be more than enough to keep you busy. But if you do decide to move on, you'll find some of the leading attractions of North Wales just a few miles away.

### Abaty Glyn y Groes

Saif adfeilion yr abaty ger yr A542 y tu allan i Langollen. Yn y 13eg ganrif ar ddeg roedd yn adeilad trawiadol iawn ac yn gartref i fynachod Sistersaidd.

[cadw.cymru.gov.uk](http://cadw.cymru.gov.uk) 01443 336000



### Valle Crucis Abbey

Ruined but hauntingly impressive home of 13th century Cistercian monks on A542 out of Llangollen.

[cadw.wales.gov.uk](http://cadw.wales.gov.uk) 01443 336000

### Bwlch yr Oernant

Dyma ffordd dyrpeg serth a thrawiadol, a grëwyd yn 1811, sydd hyd heddiw yn rhoi ias o gyffro i'r rheiny sy'n teithio tua Rhuthun.

[ahnebryniauclwydadyffryndyfrdwy.org.uk](http://ahnebryniauclwydadyffryndyfrdwy.org.uk)  
01352 810614



### Horseshoe Pass

Spectacularly steep turnpike road, built in 1811, that still delivers quite a thrill on the drive to Ruthin.

[clwydianrangeanddeevalleyaonb.org.uk](http://clwydianrangeanddeevalleyaonb.org.uk)  
01352 810614

### Capel y Rug

Dyma gapel a godwyd ger Corwen yn yr ail ganrif ar bymtheg. Y tu mewn, mae'r adeilad wedi ei addurno'n gain gyda phaent lliwgar a cherfiadau angylion, bwystifod a blodau.

[cadw.cymru.gov.uk](http://cadw.cymru.gov.uk) 01443 336000



### Rug Chapel

Vibrantly painted and intricately carved angels, beasts and flowers adorn 17th century chapel near Corwen.

[cadw.wales.gov.uk](http://cadw.wales.gov.uk) 01443 336000

