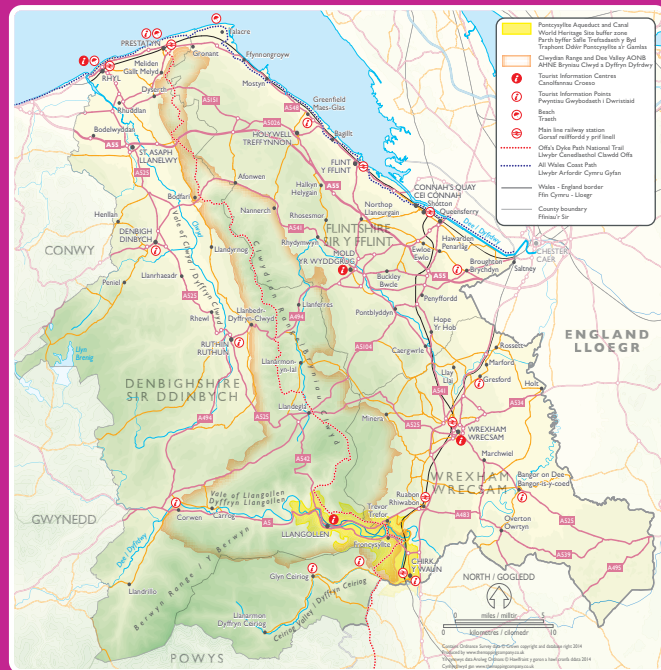


Darganfod Sir Ddinbych Discover Denbighshire



01978 860828

discoverdenbighshire.co.uk

northeastwales.co.uk

medieval-wales.com

clwydianrangeanddeevalleyaonb.org.uk

 Darganfod Sir Ddinbych
Discover Denbighshire



Fotograffau / Photography
© Crown copyright (2014) Visit Wales / © Hawffraint y Goron (2014) Croeso Cymru, White Fox, Laurence Crossman-Emms, Brian Mottershead

Tref i bob diwrnod

Nid Llanelwy yw'r unig dref yn Sir Ddinbych gyda llwybr ei hun. Mae saith llwybr arall - pob un yn llawn o ddi-ddordeb hanesyddol. Ond pob un yn wahanol iawn, gyda'r gobaith y byddwch yn darganfod hynny dros eich hunain. Cyn belled â bod gennych wythnos neu ddwy arall i'w sbario.

Ewch i Rhuthun i weld yr oriel celfyddydau cymhwysol gorau yng Nghymru, Llangollen am ei rheilffordd stêm estynedig newydd, Corwen i weld cofeb un o arwyr mwyaf Cymru a Dinbych am ei chastell ar ben y bryn a muriau tref atgofus.

**Rhuthun
Ruthin**
llwybr y
dref
town
trail
sir ddinbych
denbighshire

Llangollen
llwybr y
dref
town
trail
sir ddinbych
denbighshire

**Y Rhyll
Rhyll**
llwybr y
dref
town
trail
sir ddinbych
denbighshire

Prestatyn
llwybr y
dref
town
trail
sir ddinbych
denbighshire

Visit Ruthin for the best applied arts gallery in Wales, Llangollen for its newly extended steam railway, Corwen for a stirring memorial to Wales's greatest hero and Denbigh for its hilltop castle and evocative town walls.

Ewch i'r Rhyll ar gyfer ei phromenâd a thair milltir o dywod euraidd, Prestatyn ar gyfer dechrau Llwybr Cenedlaethol Clawdd Offa, Rhuddlan am ei chastell ar lan yr afon a Llanelwy i weld y gadeirlan hynafol leiaf ym Mhrydain.

**Dinbych
Denbigh**
llwybr y
dref
town
trail
sir ddinbych
denbighshire

Corwen
llwybr y
dref
town
trail
sir ddinbych
denbighshire

**Llanelwy
St Asaph**
llwybr y
ddinas
city
trail
sir ddinbych
denbighshire

Rhuddlan
llwybr y
dref
town
trail
sir ddinbych
denbighshire

Visit Rhyll for its promenade and three miles of golden sands, Prestatyn for the start of Offa's Dyke Path National Trail, Rhuddlan for its stupendous riverside castle and St Asaph for the smallest ancient cathedral in Britain.

A town for every day

St Asaph isn't the only town in Denbighshire with its very own trail. There are seven others - all packed with historic interest. But all very different, as we hope you'll discover for yourself. Just as long as you have another week or so to spare.

Eich antur yn Sir Ddinbych

Trefi marchnad llawn prysurdeb. Diwylliant Cymreig unigryw. Bwyd a diod blasus. Un o'r tirweddau gwarchoddedig harddaf yng Nghymru.

Bydd y syniadau'n byrlymu ar gyfer pethau i'w gwneud yn Sir Ddinbych. Ond rhag ofn... dyma ychydig o anturiaethau y dylech roi cynnig arnynt - a gallwch eu llwytho i lawr yn syth i'ch ffôn symudol.

Efallai yr hoffech roi cynnig ar weithgaredd greadigol, cael hwyl gyda'ch plant neu ymweld â hen adeiladau. Efallai bod gennych ddi-ddordeb mewn hanes cymdeithasol, teithiau cerdded yng nghefn gwlad neu deithiau trefol. Beth bynnag sydd at eich dant, mae 'na Antur Ddigidol Sir Ddinbych ar eich cyfer chi.

Gallwch chwarae "hangman" yn Rhuthun, hwylio cychod dail ar Gamlas Llangollen neu wneud cwningod yn Ninbych. Ewch i'r wefan i weld yr holl bethau sydd gan Sir Ddinbych wledig i'w cynnig i chi ar flaenau eich bysedd.

digidolsirddinbych.co.uk

Your Denbighshire adventure

Bustling market towns. A unique Welsh culture. Delicious food and drink. One of the most beautiful protected landscapes in Wales.

You won't find yourself too short of ideas about what to do in Denbighshire. But just in case we've come up with a few adventures for you try - and you can download them straight to your mobile.

You might like getting creative, fun with your kids or visiting old buildings. You might be into social history, country walks or urban strolls. Whatever you want, there's a Denbighshire Digital Adventure just for you.

You can play hangman in Ruthin, sail leaf boats on Llangollen Canal or make flopsy bunnies in Denbigh. Just visit the website to have the whole of rural Denbighshire at your fingertips.

digitaldenbighshire.co.uk



Llanelwy St Asaph

llwybr y ddinas

city trail

sir ddinbych denbighshire

Darganfod Llanelwy

Mae Llanelwy – sydd â phoblogaeth o tua 4,000 – wastad wedi ystyried ei hun fel dinas, ond nid oedd gweddill Prydain yn ymwybodol o hynny nes i'r Frenhines roi anrhydedd dinesig i'r dref yn ystod ei Jiwibili Diemwnt.

Mae wedi bod yn lle pwysig ers canol y chweched ganrif pan sefydlodd offeiriad o'r Alban, Sant Cyndeyrn, fynachlog yma. Diolch i'w leoliad ar lwybr y prif fewnlifiad i Ogledd Cymru, mae'n parhau i fod yn ganolog i bethau - ac nid yw bob amser yn dianc yn ddianaf.

O'r eglwys gadeiriol hardd ond bychan, a losgwyd gan Owain Glyndŵr, mae'r llwybr hwn yn rhedeg i lawr y rhiw ar hyd y Stryd Fawr a heibio i'r eglwys ganoloesol i ddilyn banciau coediog yr Afon Elwy.

Dylai gymryd tuag awr i gerdded, ond byddai'n well caniatáu ychydig yn hwy. Wedi'r cyfan, mae'r ddinas hon yn cynnwys 1,500 o flynyddoedd o hanes.

Exploring St Asaph

St Asaph – population about 4,000 – has always thought of itself as a city but the rest of Britain didn't catch on until the Queen awarded it civic honours during her Diamond Jubilee.

It's been an important place since the middle of the sixth century when a Scottish priest, Saint Kentigern, founded a monastery here. Thanks to its location on the main invasion route into North Wales, it's remained at the centre of things – not always escaping unscathed.

From the picturesque but tiny cathedral, once burned by Owain Glyndŵr, this trail runs downhill along the High Street and past the medieval church to follow the wooded banks of the River Elwy.

It should take about an hour of actual walking but you'd better allow a little longer. After all, this very small city does pack in 1,500 years of history.



Beth sy'n ei wneud yn arbennig?

Y gadeirlan, mae'n debyg, yw un o'r lleiaf ym Mhrydain, ond gallwch weld ei dŵr crenellog a'r clytwaith unigryw o galchfaen a thywodfaen melyn porffor o bell ac agos.

Mae'n galon i'r ddinas, yn llythrennol ac yn drosiadol. Ac mae wrth galon diwylliant Cymru hefyd – yn gartref i'r Beibl Cymraeg cyntaf, ac i lu o wyliau cerddoriaeth ryngwladol.

Ar Ffordd Pererinion Gogledd Cymru rhwng Treffynnon ac Ynys Enlli, mae hyd yn oed yn darparu porth at y “tirweddau ysbrydoledig” o amgylch y ddinas. Bydd canolbwynt digidol y tu mewn i'r eglwys gadeiriol yn rhoi mwy o wybodaeth i chi.

Fel arall, codwch gopi o “Mwynhewch Sir Ddinbych Ganoloesol” neu ewch i medieval-wales.com.

What makes it special?

The cathedral may be about the smallest in Britain but you can see its crenellated tower and that unique patchwork of yellowish limestone and purple sandstone from miles around.

It's at the heart of the city, literally and metaphorically. And at the heart of Welsh culture too – home of the very first Welsh Bible and host of an international music festival.

Lying on the North Wales Pilgrim's Way between Holywell and Bardsey Island, it even provides a gateway to the “inspirational landscapes” surrounding the city. A digital hub inside the cathedral will tell you more.

Otherwise pick up a copy of “Enjoy Medieval Denbighshire” or visit medieval-wales.com

Ble awn ni nesaf?

Dylai'r siopau, y caffis, y tafarndai a'r adeiladau hanesyddol yn Llanelwy eich cadw'n brysur am sbel. Os ydych chi'n penderfynu symud ymlaen, mae rhai o atyniadau enwocaf gogledd Cymru daflriad carreg o'r ardal.

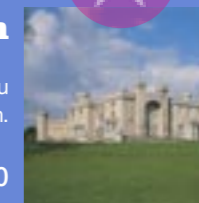
Where shall we go next?

The shops, cafés, pubs and historic buildings of St Asaph should keep you busy for a while. When you do decide to move on, you'll find some of the leading attractions of North Wales just a few miles away.

Castell a Pharc Bodelwyddan

Tŷ hanesyddol, amgueddfa a phartner yr Oriol Bortreadau Genedlaethol – gyda'i faes chwarae antur ei hun.

bodewyddan-castle.co.uk 01745 584060



Bodelwyddan Castle and Park

Historic house, museum and partner of the National Portrait Gallery – with its own adventure playground.

bodewyddan-castle.co.uk 01745 584060

Castell Rhuddlan

Nid yn unig y bu i Edward I adeiladu Castell godidog Rhuddlan – dargyfeiriodd yr afon fel y gellid ei chyflenwi o'r môr.

cadw.cymru.gov.uk 01443 336000



Rhuddlan Castle

Edward I didn't just build magnificent Rhuddlan Castle – he diverted a river so it could be supplied by sea.

cadw.wales.gov.uk 01443 336000

Castell Dinbych

Caer fawr o'r 13eg ganrif gyda chanolfan ymwelwyr eco-gyfeillgar a hanner milltir o waliau tref.

cadw.cymru.gov.uk 01443 336000



Denbigh Castle

Imposing 13th century fortress with an eco-friendly visitor centre and half a mile of town walls.

cadw.wales.gov.uk 01443 336000

